

dunkel (Vorschlag)



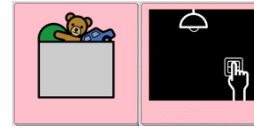
LGF32 2022.10

hell (Vorschlag)



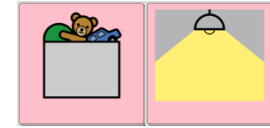
LGF32 2022.10

aus



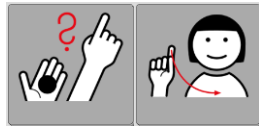
LGF32 2022.10

an



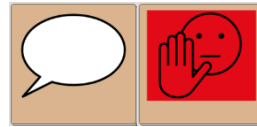
LGF32 2022.10

nochmal



LGF32 2022.10

Halt



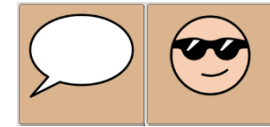
LGF32 2022.10

genug (Vorschlag)



LGF32 2022.10

cool



LGF32 2022.10